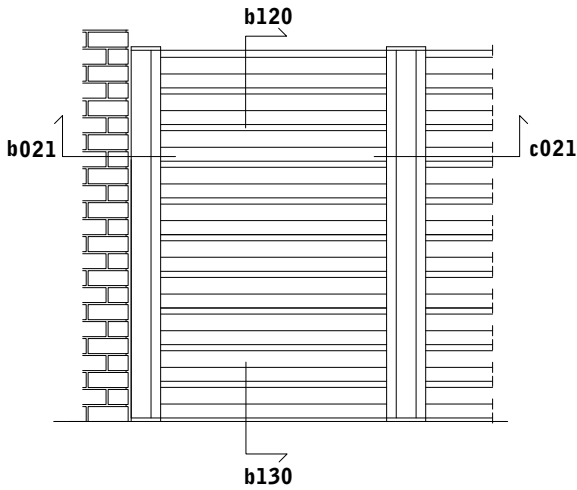


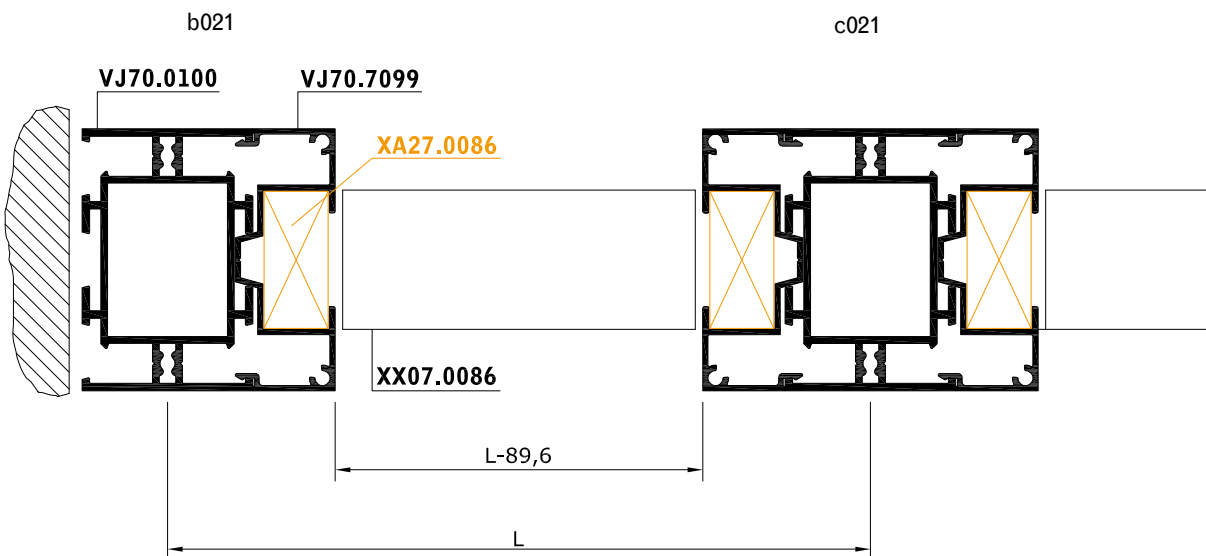
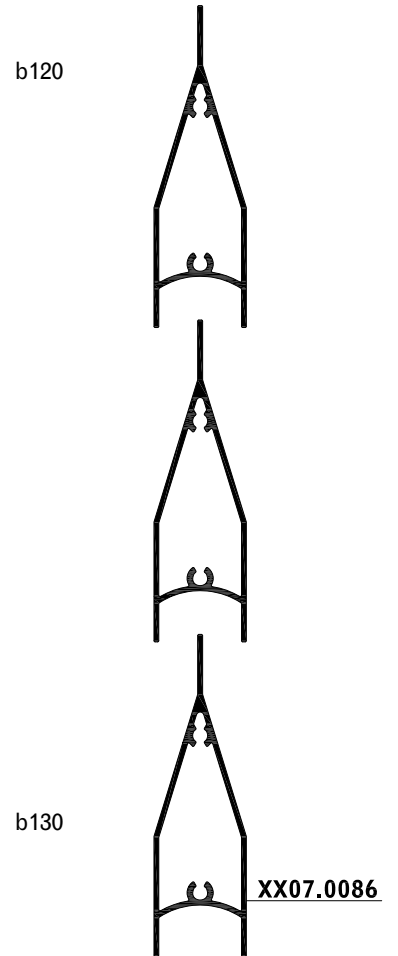


**VALLA FIJA**  
VA70(B2=10(XX07-006));0

E: 1/2



SECCIÓN VERTICAL  
b120-b130

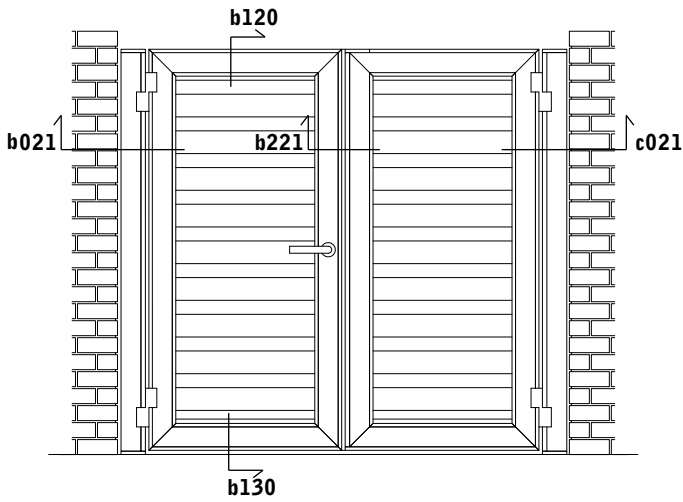


SECCIÓN HORIZONTAL b021-c021

**PUERTA CANCELA DE DOS HOJAS**

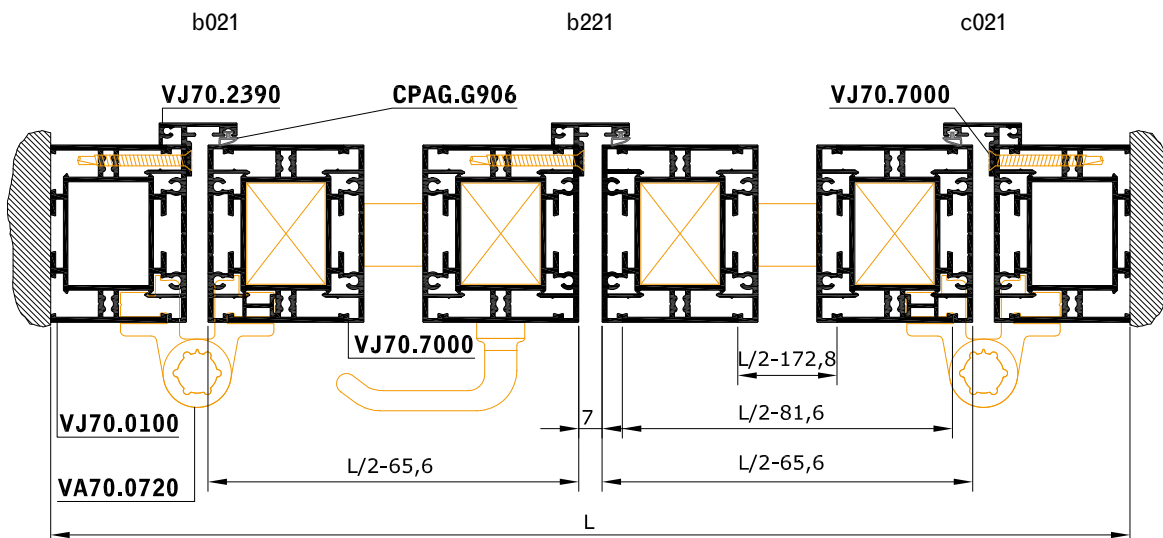
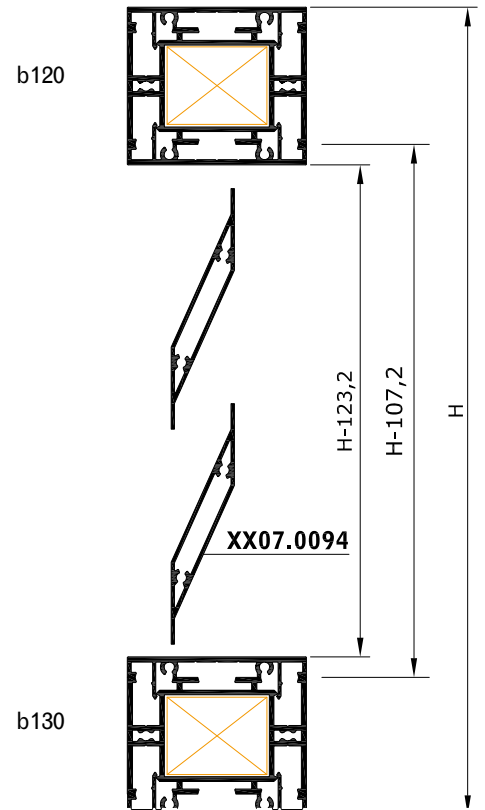
VA70(B2=200E(XX07.0094));0

E: 1/3



INVERSOR VJ70.2390: H-16

SECCIÓN VERTICAL  
b120-b130



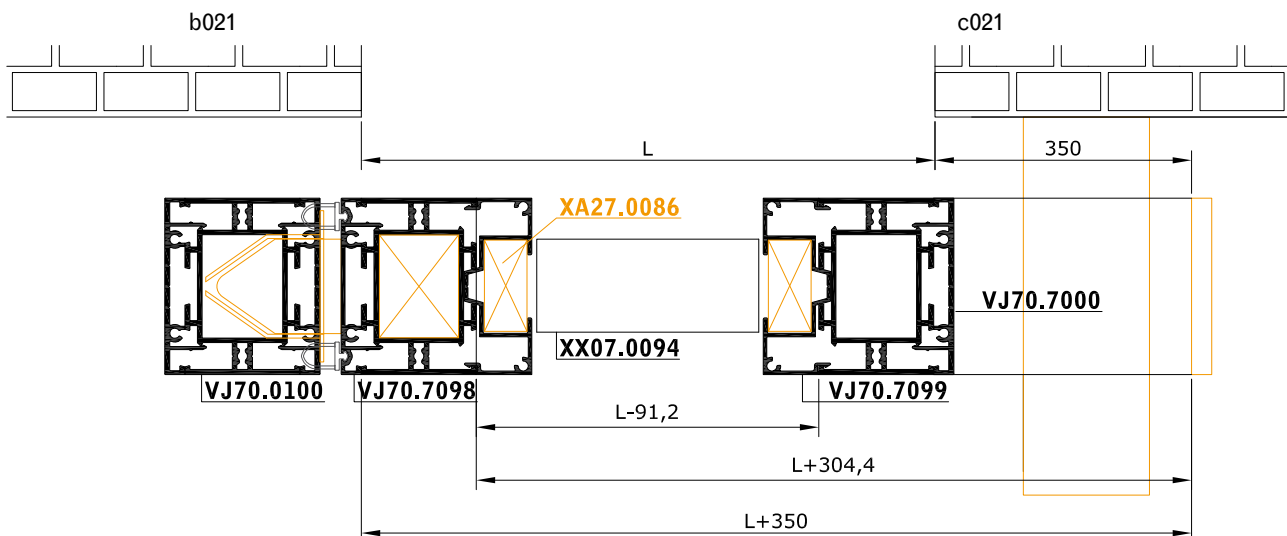
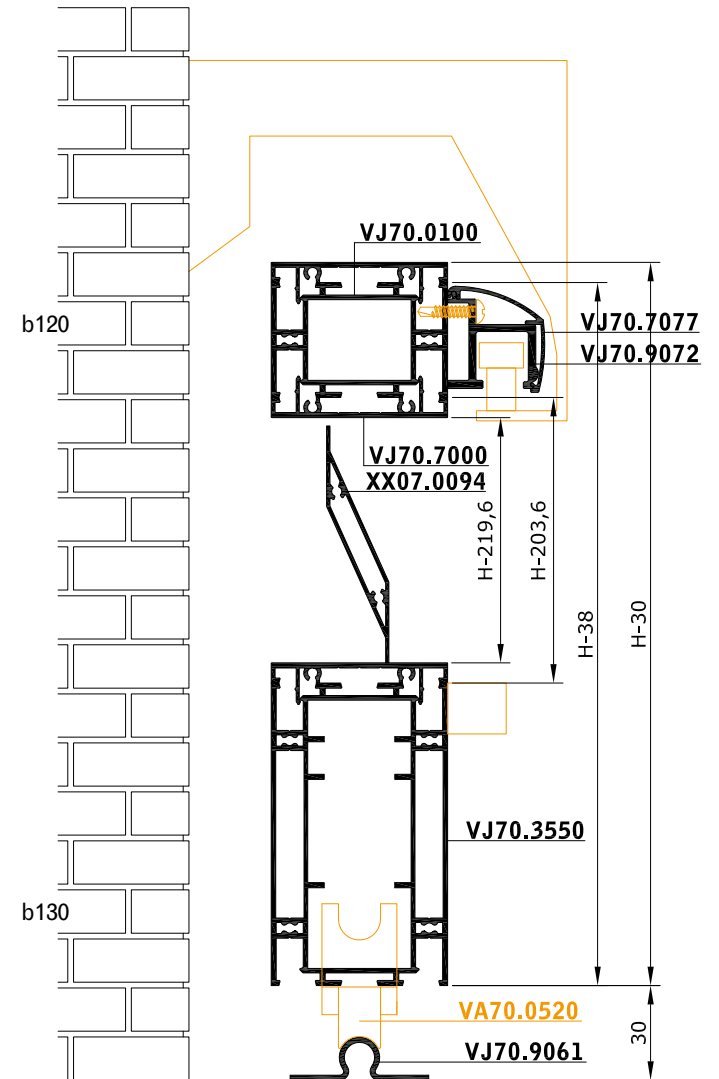
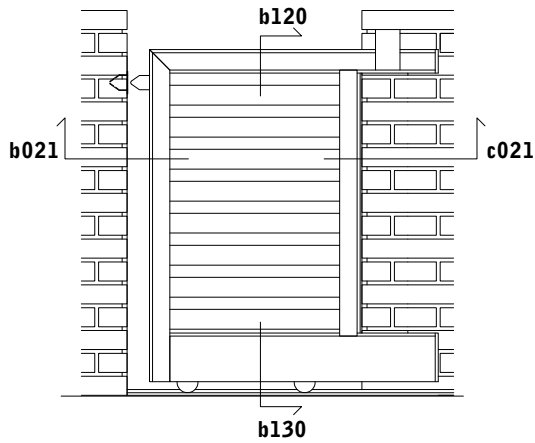
SECCIÓN HORIZONTAL b021-b221-c021



**PUERTA CANCELA 1 HOJA CORREDERA**  
VA70(B2=80D(XX07-0094));0

E: 1/3

SECCIÓN VERTICAL  
b120-b130



SECCIÓN HORIZONTAL b021-c021

VJ70  
14